

Specification sheet LX 1889

Parapet drainage system

Series 43 Parapet direct without penetrating the roof

Emergency drainage

Gravity flow

Silent Power

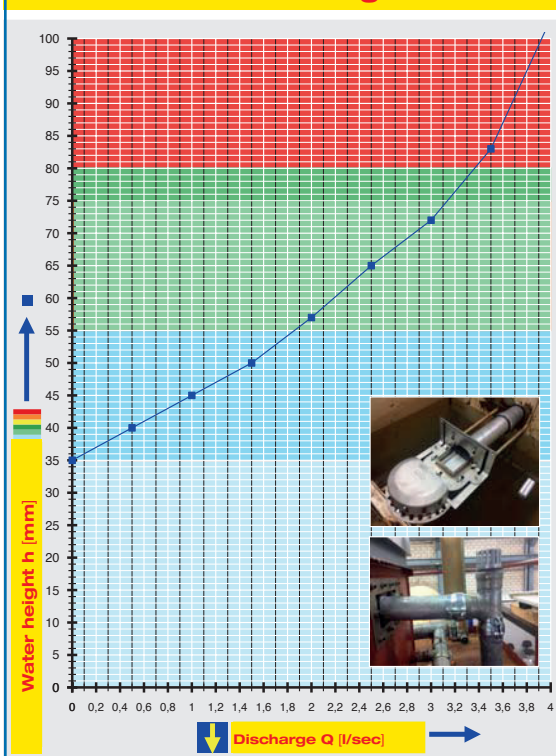
Discharge rate:	3,1 l/sec
Water height:	75 mm
Roof penetration:	0 mm
Diameter:	DN 100
LX-Number:	LX 1889
Weir height:	40 mm
Drain:	ventilated
Downpipe:	ventilated
Downpipe height:	variable
Drainage:	In sewer
Flange form:	Clamping flange 90°

LX 1889 Piece list

1 x Art.-No. 01332.100X, parapet emergency drain
 1 x Art.-No. 13236.100X, LORO-X sliding flange
 1 x Art.-No. 00200.DDOX, LORO-X branch
 1 x Art.-No. 13217.100X, LORO-X vent piece
 1 x Art.-No. 01011.100X, LORO-X pipe with one socket

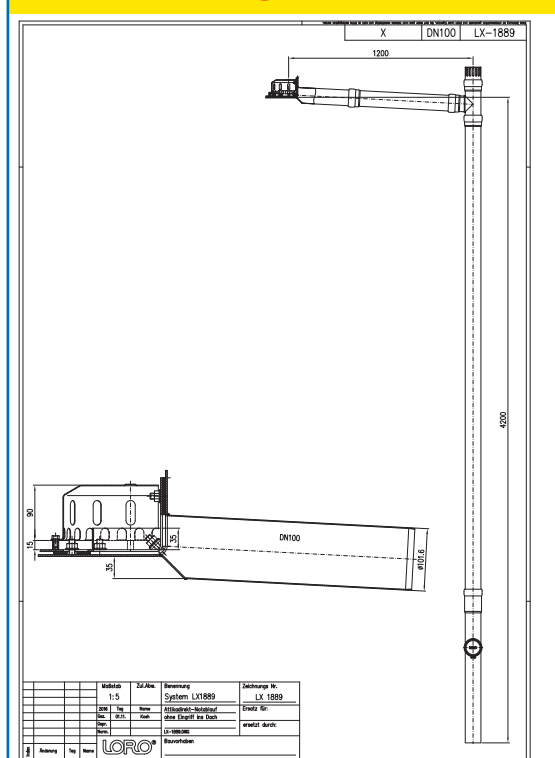
1 x Art.-No. 00320.100X, LORO-X bend
 3 x Art.-No. 00975.100X, LORO-X pipe clamps
 3 x Art.-No. 09604.200X, LORO-X threaded rods
 4 x Art.-No. 00911.100X, LORO-X sealing elements
 1 x Art.-No. 00986.000X, LORO-X lubricant

hQ - Head Discharge curve



Systempower

CAD



Systemshape

Water height	mm	15	20	25	30	35	40	45	50	55	60	65	70	75	80	85	90	95	100
Discharge	l/sec	-	-	-	-	-	0,5	1,0	1,5	1,9	2,2	2,5	2,9	3,1	3,4	3,5	3,7	3,8	3,9
Silent																			

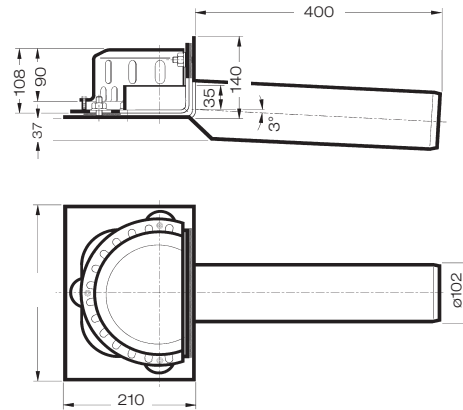
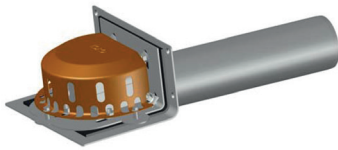
LORO-X Parapet direct drain, without penetrating the roof

DN 100

LX1889-1X

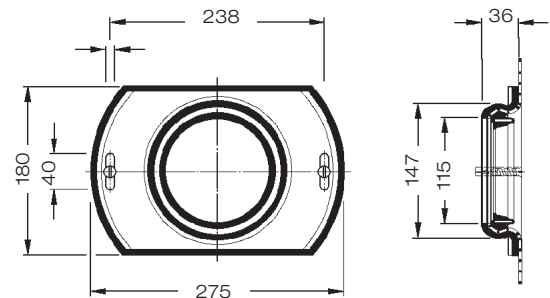
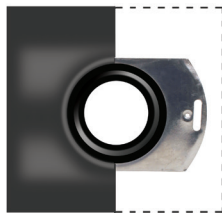
Drain Art.-No. 01332.100X
Weight: 5,6 kg

with clamping flange 90°
for plastic roofing sheets



LORO-X Sliding flanges

with pre-installed connection sleeve for vapor barrier made of bituminous or plastic- roofing sheets (please indicate manufacturer and material of the sealing sheet to be attached), made of galvanized steel, including fastening screws
Article no. 13236.100X
Weight: 1,7 kg



Heat tracing: Lorowerk recommends to check all drains and pipes with regard to their frost-sensibility. Where necessary, these parts should be upgraded with heat tracing.